



Table Blender

User Manual



TBN 62608 W

EN - DE - FR - ES - IT - PL - SL - CS - SRB - SQ - MK - RO - RU - AR



01M-8911883200-0425-09

CONTENTS

ENGLISH	03-15
DEUTSCH	16-34
FRANÇAIS	35-49
ESPAÑOL	50-66
ITALIANO	67-83
POLSKI	84-99
SLOVENŠČINA	100-111
CZECH	112-123
СРБИН	124-135
SHQIPTARE	136-147
МАКЕДОНСКИ	148-166
ROMÂNĂ	167-186
RUSSIAN	187-221

Please read this guide first!

Dear Customer,

Thank you for choosing a BEKO product. We would like you to achieve the optimal efficiency from this high quality product which has been manufactured with state of art technology. Please make sure you read and understand this guide and supplementary documentation fully before use and keep it as a reference. Include this guide with the unit if you hand it over to someone else. Observe all warnings and information herein and follow the instructions.

Symbols and their meanings

These symbols are used throughout this guide:



Important information and recommendations regarding the use of the appliance.



WARNING: Warnings on personal injury or property damage.



Suitable for contact with food.



Do not immerse the appliance, the power cord or the plug in water or in any other liquids.



Electric shock protection rating



**RECYCLED &
RECYCLABLE
PAPER**

1 Important safety and environmental instructions

This section contains safety instructions to prevent hazards that can result in injury or property damage.

Any warranty is void if these instructions are not followed.

1.1 General safety

- This appliance complies with international safety standards.
- Appliance may be used by persons with limited physical, perceptual or mental abilities or persons with a lack of experience and knowledge if they are supervised or given instructions on the operation of the appliance and any relevant risks they may be encountered. children shall not play with the appliance.
- Do not use the appliance if the power cord, the appliance or the appliance blade is damaged. Contact authorized service.
- Use only original parts or parts recommended by the manufacturer.
- Do not disassemble the appliance.
- Do not operate the appliance or its components over or near hot surfaces or do not put on such surfaces.
- Do not use the appliance for hot meals.
- For security reasons, the product would not operate in case you leave the lid open.
- Your mains power supply shall be in align with the specified information on the type tag.
- Do not use the appliance with an extension cord.
- Do not touch the plug of the appliance while your hands are damp or wet.
- Do not unplug the appliance by pulling on the cord.
- Switch off the appliance and disconnect from supply before changing accessories or approaching parts that move in use.
- Serious injury may result from misuse when emptying the container, during cleaning and when touching the chopping blade with bare hands. Handle the chopping blade carefully, trying to hold it only by its plastic part.
- Never touch the blades while using the appliance. There is a risk of injury

1 Important safety and environmental instructions

due to improper usage.

- After cleaning, prior to energizing or assembling the parts, dry the appliance and all of its parts.
- Do not immerse the appliance, the power cord or the plug in water or in any other liquids.
- If you keep the packaging materials, keep them out of the reach of children.
- Children must not use the device. Store the appliance and its electrical cord out of the reach of children.
- Always use the appliance on a stable, flat, clean and dry surface.
- This appliance is intended to be used in household and similar applications such as:
 -
- Do not squeeze or bend the power cord and do not rub in on sharp edges in order to prevent any damage. Keep the cord away from hot surfaces and open flames.
- Before using the appliance for the first time, clean all parts carefully which come into contact with food. Please see full details in the "Cleaning" section.
- Do not touch any moving parts of the appliance. Do not attach or remove the parts until the device comes to a complete stop.
- Be careful when handling the sharp cutting blades, emptying the bowl and during cleaning
- Be careful if hot liquid is poured into blender as it can be ejected out of the appliance due to a sudden steaming
- Always disconnect the appliance from the supply if it is left unattended and before assembling, disassembling or cleaning.
- CAUTION: In order to avoid a hazard due to inadvertent resetting of the thermal cut-out, this appliance must not be supplied through an external switching device, such as a timer, or connected to a circuit that is regularly switched on and off by the utility.

1 Important safety and environmental instructions

1.2 Compliance with the WEEE Regulations and Waste Disposal

This product complies with EU WEEE Directive (2012/19/EU). This product bears a classification symbol for waste electrical and electronic equipment (WEEE).



This symbol indicates that this product shall not be disposed with other household wastes at the end of its service life. Used device must be returned to official collection point for recycling of electrical and electronic devices. To find these collection systems please contact to your local authorities or retailer where the product was purchased. Each household performs important role in recovering and recycling of old appliance. Appropriate disposal of used appliance helps prevent potential negative consequences for the environment and human health.

1.3 Compliance with RoHS Directive

The product you have purchased complies with EU RoHS Directive (2011/65/EU). It does not contain harmful and prohibited materials specified in the Directive.

1.4 Packaging information



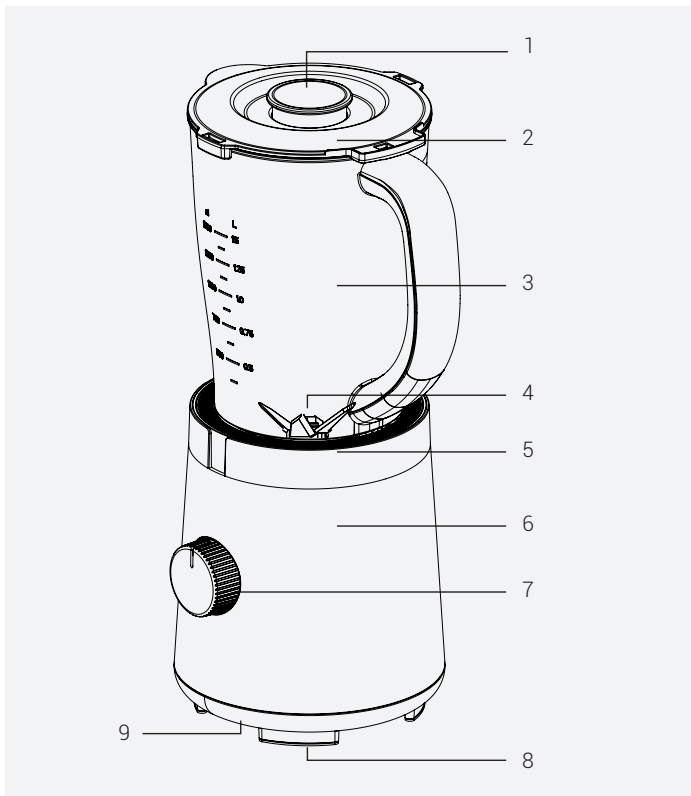
Packaging materials of the product are manufactured from recyclable materials in accordance with our National Environment Regulations. Do not dispose of the packaging materials together with the domestic or other wastes. Take them to the packaging material collection points designated by the local authorities..

1.4 What to do for energy saving

Before adding solid food to the appliance, cut them into small pieces as indicated in the manual. Follow the other instructions and durations specified in the manual. If it is applicable for the food to be prepared, select lower speed levels. Turn off and unplug the appliance after use.

2 Your Blender

2.1 Overview



The values provided with the appliance or its accompanying documents are laboratory readings in accordance with the respective standards. These values may differ depending on the use and ambient conditions.

2 Your Blender

1. Measuring cap
2. Lid
3. Jug
4. Chopping blade
5. Decorative ring
6. Motor unit
7. Speed adjustment button
8. Non-slip base
9. Cable wrap (under the appliance)

Technical data

Voltage: 220-240V~, 50-60Hz

Power: 600W

Insulation class: II

The rights to make technical and design changes are reserved.

3 Operation

3.1 Intended use

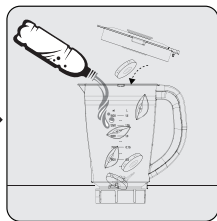
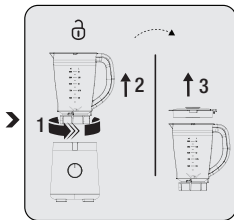
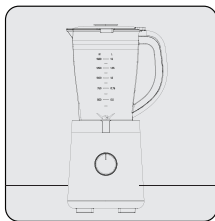
The appliance is intended for home use only, it is not suitable for professional use.

The appliance is designed to chop small solid foods (e.g. onion, potato, carrot) and fruits (e.g. Strawberries, banana).

3.2 First operation

Clean the parts of the appliance before the first use (see 3.1.)

3.3 Start Up



Place the appliance on a fixed and level surface.

To remove the jug (3) from the motor unit (6), turn it to the "0" symbol and take it out. Place the jug (3) to a level surface and turn and lift the lid (2) turn it to the "0" symbol and take it out.

Place the ingredients you would like to prepare in the jug (3) and close the lid (2).



- Do not operate the appliance empty or without a lid.
- Do not touch the blades with bare hands.
- For security reasons, the product would not operate in case you leave the lid open.

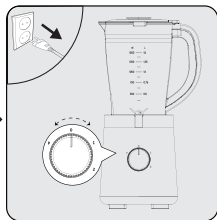
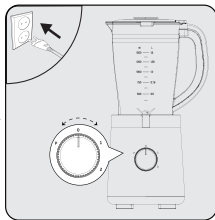
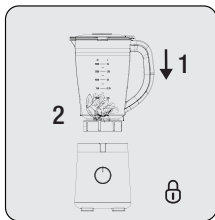
3 Operation



- In your fruit milk mixes (strawberry, banana, etc.), fill the milk up to a maximum of 1000 ml. Otherwise, overflows or leaks may occur during the process.
- Do not shred dried fruits such as almonds and hazelnuts with the device.
- You can process food at a maximum temperature of 40°C in the appliance.
- Do not insert any objects into the jug (3) while the appliance is operating.
- Use the measuring cap (1) port to add material to the jug during the mixing process.



Do not remove the material from the jug (3) before the chopping blade (4) stops completely.



Place the jug (3) to motor unit (6) upright, turn it to the "0" symbol to lock it in its place.

Plug the appliance to the socket and start operating by selecting the speed level (7).

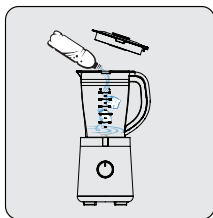
When mixing is complete, turn the speed adjustment knob (7) to the "0" position and remove the plug from the socket.

3 Operation

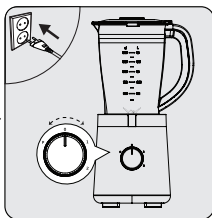
3.4 Crushing ice



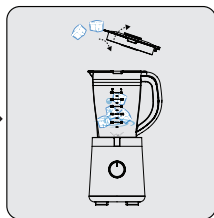
- Add water to the jug (3) to break ice in the appliance.
- To process crushed ice, we recommend adding three quarters of ice and 15 ml of cold drinking water to the container.



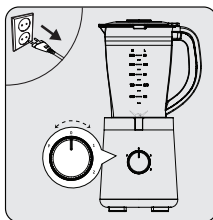
After adding 15 ml of water into the jug (3), add 3/4 ice.



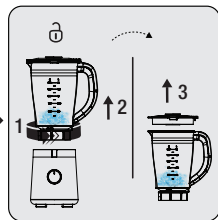
Plug the appliance to the socket and start operating by selecting the speed level (7).



To add more ice during operation, open the measuring cap (1) and add ice cubes.



When mixing is complete, turn the speed adjustment knob (7) to the "0" position and remove the plug from the socket.



To remove the jug (3) from the motor unit (6), turn it to the "0" symbol and take it out. Place the jug (3) to a level surface and turn and lift the lid (2) turn it to the "0" symbol and take it out.

3 Operation

3.5 "P" position

The process of 1-2 seconds operation in the position "P" on the speed adjustment button (7) is called "PULSE".

For high speed mixing with short strokes, keep the speed adjustment knob (7) in the "P" position. When you release the button, the speed adjustment knob (7) automatically returns to the "OFF" position and the device starts to stop.

3.6 Recipe

In order to obtain a good chopping performance, the amount of food put into the chamber and the size of the food should be selected appropriately. Below is an example for carrots and similar vegetables. It can vary between food types, it is recommended to properly place the food in the chamber.

FOOD TYPE	SPEC	WEIGHT	SPEED	TIME
Carrot (apple, pear etc.)	Cut into 15mm*15mm* 15mm	Carrot: 650g Water: 850g	High speed	30s

3.7 Tips for blending

1. To add ice cubes to the mixes while the blender is running, dispose of one ice cube at a time by removing the measuring cap (1). To make the blender mix the ice properly, wait for a few seconds before adding the next ice cube.
2. To add more food, remove the measuring cap (1) and insert the ingredients through the hole. Make sure the food is cut to a size of 2-5 cm to fit through the hole. Put back the cap (1) when you have finished adding ingredients.
3. While blending solid food like raw vegetables, cooked or raw meat, and fruits, always cut these materials into pieces of 2-5 cm length before putting them in the jug (3). Do not put more than 2 units of such food at once in the blender. This will speed up the blending process and reduce the abrasion on the blender blades (8).

3 Operation

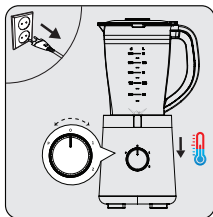
4. Unless otherwise described in the recipe, always add the liquid ingredient in the jug (3) first.
5. To blend a drink, put all ingredients in the jug (3) at once.
6. Avoid over-blending. It is usually enough to blend for a few seconds.
7. Over-blending turns food into mush.

4 Cleaning and maintenance

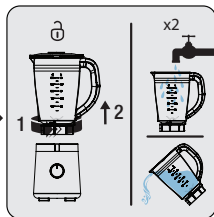
4.1 Cleaning



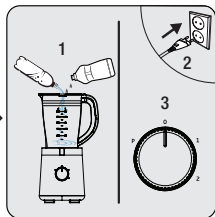
- Never use gasoline, solvents, abrasive cleaners, metal objects, or hard brushes to clean the appliance.
- Be careful when cleaning the chopping blades unit. The chopping blade (4) is sharp. Try not to hold it from the blade side and do not immerse it in water.
- Never clean the blades with bare hands.
- Clean the table blender after each use. Do not let any residual food dry on or in the blender. It will be harder to clean it if you do so.
- Do not use boiling water. The bearings of the blade assembly have a life-long lasting lubrication feature. Using boiling water damages these bearings and shortens the lifetime of the blender.



Turn the appliance off and unplug it. Wait for the appliance to cool down.



Remove the jug (3) from the motor unit (6). Rinse with water to clean up large food residues that can pile up in the container.

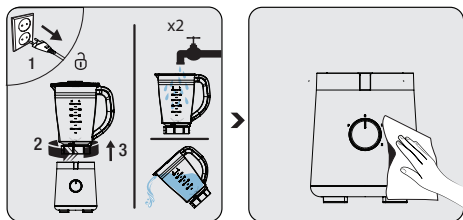


Place the jug (3) in its place. Add warm water and 1 to 1 ½ unit of liquid detergent and operate the blender in high speed for a few seconds.



You can wash the jug (3) and lids in the dish washer.

4 Cleaning and maintenance



Unplug the appliance. Remove the jug (3) from the motor unit (6) and rinse it with water. If necessary, repeat the same steps.

Use a soft and damp cloth and a mild amount of cleaning agent to clean the motor unit (6).

4.2 Storage

- If you do not intend to use the appliance for a long time, store it carefully.
- Unplug the appliance before storing.
- Store the appliance in a cool dry place.
- Store the appliance and its cord out of the reach of children.

4.3 Transport and shipping

- During transport and shipping, carry the appliance with its original packaging. The packaging of the appliance will protect the appliance against physical damage.
- Do not put heavy objects on the appliance or its packaging. Otherwise the appliance may be damaged.
- If the appliance is dropped, the appliance may not operate or permanent damage may occur.